

- Instruments to process manioc and ground nuts
- "decortiqueuse de riz"
- Market development
- Make available farming implements
- Rehabilitate water points and support sustainable water reserves through reforestation of water courses
- Forest rehabilitation
- Reorganisation of the Rainmaker guild
- Reorganisation of mourning ceremonies
- Set up nurseries
- Dredging/de-sanding of lake
- Introduction of short-cycle mais to prevent flooding/water damage
- New manioc varieties
- Phytosanitary implements against insects/pests that attack beans
- Obtain seed materials
- Improved storage methods
- Cree rune embouchure qui devra rester en permanence ouvert/create a lake mouth that remains open
- Animal enclosures
- Manage conflict between livestock farmers and agriculturalists
- Strengthen investment capacity
- Floating cages for pisci-culture
- Get tractor
- Rear rabbits; need support materials
- Epizooties and animal health
- Water pump/motor pump
- Wood plantation for boat making

## Annex 5. Summary of Training Needs and Capacity Assessment

During the PPG phase a draft capacity assessment/elements for a capacity building/training strategy was prepared. The identified training/capacity needs components are strictly following the project design and perceived capacity needs only. The following table summarizes PPG report MEPN – PPG 3.

Table 1: Identified training needs

Stakeholders	Key capacity building components/trainings themes identified
Community based institutions/individuals (in demonstration villages, pilot communes)	<ul style="list-style-type: none"> <li>- EWS data collection and transmission</li> <li>- Adaptation measures: soil fertility management, water management, erosion control</li> <li>- Stock management (natural resources)</li> <li>- Institution building: ecological fishing techniques</li> <li>- Modern livestock husbandry techniques</li> <li>- Grazing development and management (especially along transhumance corridors)</li> <li>- Access to veterinary services and medicines</li> <li>- Investments for implementation of new techniques</li> <li>- Investment to dredge/de-sand lake</li> </ul>
Communes (i.e. Environment & Development Service)	<ul style="list-style-type: none"> <li>- Integration of climate change risk and adaptation needs into agricultural sector and PDCs</li> <li>- Mobilization of funds especially through commune budgets</li> <li>- Training in agro-meteorological methods at commune level as part of overall EWS</li> </ul>
Decentralised line Ministries (i.e. CeCPA, RCPN)	<ul style="list-style-type: none"> <li>- Management of climate change risk</li> <li>- Integration of climate change risk and adaptation needs into agricultural sector and PDCs</li> <li>- Application of vulnerability maps (perhaps also generation of these maps)</li> </ul>
ONS (National Revenue/Price Support Office/Office National de Soutien des Prix)	<ul style="list-style-type: none"> <li>- CC and CCA financial planning and development of a Fond for the management of uninsurable CC risks</li> <li>-</li> </ul>
DICAF	<ul style="list-style-type: none"> <li>- Integration of climate change risk and adaptation needs into agricultural sector</li> <li>- Prevention and management of climate change risk</li> <li>- Mobilization of CC and CCA funds, especially for EWS</li> <li>- Development and integration of variety of CCA training materials in ongoing DICAF training activities (Agriculture Council) (especially with focus on V&amp;A/CC and food security)</li> <li>- Setting of seeding dates (linked to agricultural calendars)</li> </ul>
MEPN	<ul style="list-style-type: none"> <li>- Funds for the operationalisation of the CC Unit</li> </ul>
Media/Press	<ul style="list-style-type: none"> <li>- Sensibilisation to CC risks and CCA issues in Benin</li> </ul>
National Meteorological Service	<ul style="list-style-type: none"> <li>- Strengthen national observatories systems (equipment, upgrading of stations)</li> <li>- Strengthen data transmission systems</li> <li>- Acquisition of numerical models and training in their application</li> </ul>

	<ul style="list-style-type: none"> <li>- Staff development (for EWS)</li> </ul>
INRAB	<ul style="list-style-type: none"> <li>- Support in the production of seeding/planting material and awareness about the availability of certified short-cycle varieties(developed/tested in Benin) adapted/suitable for each agro-ecological zone</li> <li>- Fish stock production/ breeding</li> </ul>
Soil and Water Science laboratories & CENATEL	<ul style="list-style-type: none"> <li>- Production of vulnerability maps</li> <li>- Production of new agronomic potential maps for selected agro-ecological zones</li> <li>- Review/ elaboration of agricultural calendars integrating climate change trends and risks</li> <li>- Dissemination of calendars to key target groups: farmers</li> </ul>
Project staff	<ul style="list-style-type: none"> <li>- Scientific and traditional knowledge based in climate forecasting and risk management methods</li> <li>- Communication plan development</li> <li>- Website development and content management</li> <li>- Development of best practice guide</li> <li>- Translations into vernacular (as required)</li> </ul>

CCA related capacity needs at the local, commune and national level, separated into individual, institutional and systemic needs identified through PPG inputs (capacity strategy, field consultations and individual interviews) are summarized in Table 2:

Table 2: Identified capacity needs relating to CCA

Stakeholders	Individual capacity	Institutional capacity	Systemic capacity
Community members/ villagers (farmers, fishermen) and CBOs	<ul style="list-style-type: none"> <li>- General information needs on CC risk and CCA</li> <li>- Adaptation options for the agricultural and fisheries sectors</li> <li>- Planning training</li> <li>- Farmers Action Research and participatory M&amp;E</li> <li>- Financial investment capacity</li> <li>- Savings/ securities against shocks</li> <li>- Management of food i.e. food security in extreme situations (drought/lost harvests due to floods)</li> </ul>	<ul style="list-style-type: none"> <li>- institution building process and personal roles</li> <li>- Guidance on systematic (CCA) planning</li> <li>- Financial and management training</li> <li>- Reporting skills</li> <li>- Facilitation of participatory approaches</li> <li>- Conflict resolution</li> <li>- Basic institutional investments (e.g. community room, money box, basic telecommunication, office equipment)</li> <li>- Gender integration</li> <li>- Organisation/ requests for support (by the Commune, decentralized line Ministries, other service providers)</li> </ul>	<ul style="list-style-type: none"> <li>- CBO constitution and bylaws</li> <li>- Participation in commune level decision-making (e.g. in project structure) – how to best represent the needs of the community?</li> <li>- PDCs and annual adaptation workplans (PTAs)</li> </ul>

<p>Commune/decentralized line Ministries/service providers</p>	<ul style="list-style-type: none"> <li>- General information needs on CC risk and CCA</li> <li>- Planning and budgeting training</li> <li>- Facilitation of participatory approaches</li> <li>- Communication, outreach and awareness raising skills</li> <li>- Resource mobilization for CCA</li> <li>- Adaptation options for the agricultural and fisheries sectors</li> <li>- Knowledge about appropriate CC risk assessment</li> <li>- Knowledge about CCA tools and techniques appropriate to each agro-ecological zone</li> <li>- Knowledge and methods on EWS</li> </ul>	<ul style="list-style-type: none"> <li>- Finances</li> <li>- Outreach budgets</li> <li>- Infrastructure: offices, communication (phone, fax, email, internet), transportation</li> <li>- Investments for community adaptation action support</li> <li>- Multi-stakeholder consultation and coordination</li> </ul>	<ul style="list-style-type: none"> <li>- PDCs need to include CCA</li> <li>- Commune and regional ministry budgets need to incorporate CCA needs</li> <li>- Sectoral policies to cater for CCA</li> <li>- PRSP need to include CCA needs</li> <li>- National budget allocations needed for CCA on commune/local level</li> </ul>
<p>National level institutions</p>	<ul style="list-style-type: none"> <li>- General information needs on CC risk and CCA</li> <li>- Adaptation options for the agricultural and fisheries sectors</li> <li>- Planning and budgeting training</li> <li>- Resource mobilization for CCA</li> <li>- Facilitation of participatory approaches</li> <li>- Community outreach</li> <li>- Training skills</li> <li>- Communication, outreach and awareness raising skills</li> <li>- Lobbying and agenda setting skills</li> <li>- Knowledge about appropriate CC risk assessment</li> <li>- Knowledge about CCA tools and techniques appropriate to each agro-ecological zone</li> <li>- Knowledge and methods on EWS</li> </ul>	<ul style="list-style-type: none"> <li>- Dedicated, agenda setting and well resourced climate change unit</li> <li>- Multi-stakeholder consultation and coordination mechanism</li> <li>- Infrastructure: offices, communication (phone, fax, email, internet), transportation</li> <li>- National, sectoral and commune level development planning and budgeting</li> <li>- Absence of staff performance management agreements and staff development plans, including incentives</li> <li>- SNT budgets</li> </ul>	<ul style="list-style-type: none"> <li>- Sectoral policies to cater for CCA</li> <li>- PRSP need to include CCA needs</li> <li>- National budget allocations needed for CCA on commune/local level</li> <li>- Policy M&amp;E (Impact monitoring)</li> </ul>

	****		
--	------	--	--

TR.

## Annex 6: Draft design elements for agro-meteorological information system

### The issue:

An agro-meteorological forecasting and Early Warning System is needed in Benin, which would provide critical information to local farmers and extension services in support of adaptive decision making in agriculture and natural resource based production systems.

Changes in climate and weather patterns include a shift in the on-set of the rainy season, frequent dryspells and torrential rainfall leading to a lowering in productive and often to food insecurity.

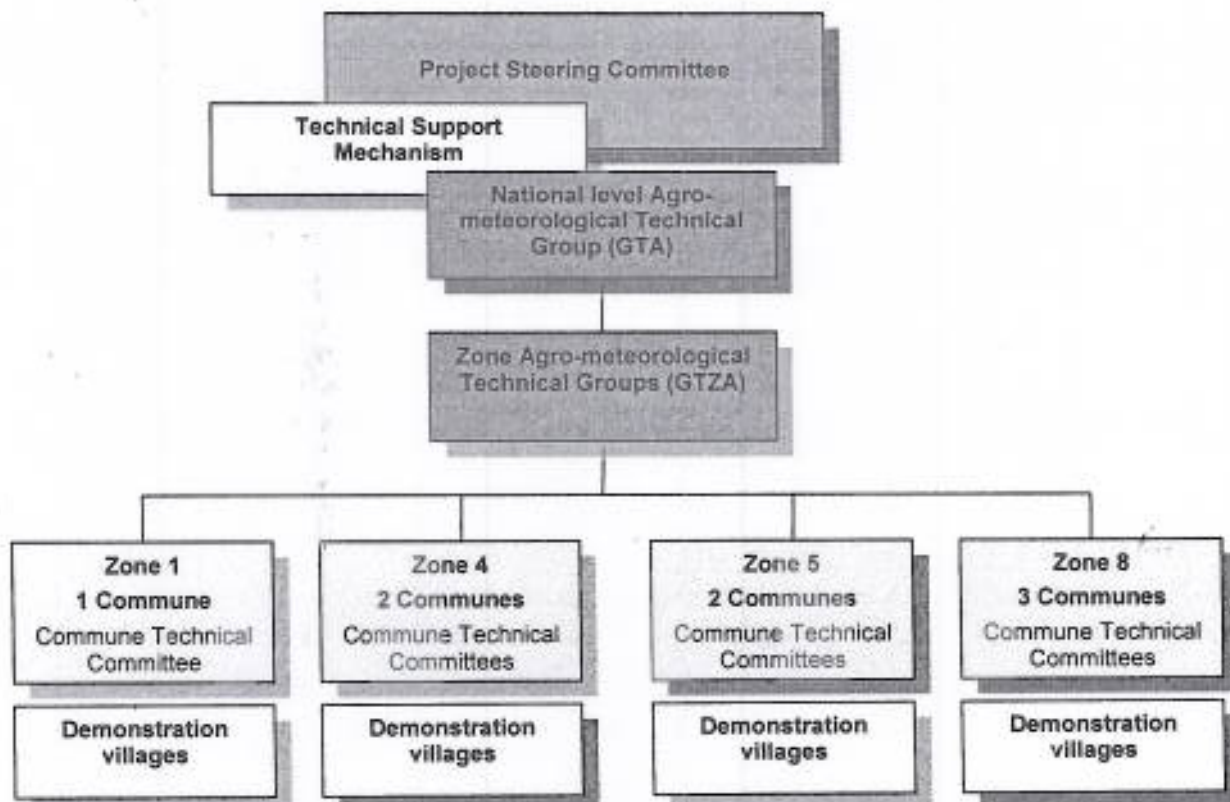
An improved information base on the expected weather and agro-meteorological conditions will allow farmers to plan planting, seeding and harvesting according to the predictions, as well as the choice of crops, vegetables, varieties, cultivars, and land husbandry practices. Livestock owners can decide on de- or re-stocking, management of grazing areas, and animal health and supplement fodder.

Currently no integrated agro-meteorological information system exists in Benin. Although in the 1990ties a specific project was launched supporting the Meteorological Services and the MAEP in setting up such a national system, it discontinued after funding ceased. However, some lasting capacity impacts are observed especially within Government service with certain staff members well recalling the approaches and benefits from the pilot.

### What will be done:

- The observation network for collecting agro-meteorological data needs to be improved. Existing rainfall stations need to be upgraded to monitor other climate characteristics, but also agricultural and hydrological ones.
- The LDFC project will assist with establishing the newly envisaged system in four pilot agro-ecological zones in specific communes. Based on the lessons learned from the pilot, the project will facilitate the development of a National Strategy up-scaling the approach and a funding plan to implement the Strategy.
- Based on experiences made in Mali with a similar system, a draft approach has been developed, which will be further detailed and improved during the early project phase. During the PPG phase a country visit to Mali was facilitated for the PPG coordinator and other Beninoise stakeholders (see MEPN – PPG 6, 2009<sup>36</sup>).
- End-user needs have to be met with the forecasting and information system developed. This is key to the approach. A needs assessment will be carried out in the beginning of the project, to determine exactly what agro-meteorological information is needed for decision-making by local farmers and in support of extension services. Various stakeholder, their needs and capacities will be assessed in some detail
- Observatories will be equipped in a systematically identified observatory network, which meets information and data requirements.
- Local community members and the responsible communes will be trained in data collection and data transmission. Local log sheets will be kept, which will also be used for on-site purposes and decision making. As part of a Farmers Action Research project, local farmers will be trained in plotting the collected data and determine systematically weather trends. The helps build local capacities in dealing with such information and interpreting it for decision making purposes.
- An overall capacity building strategy will be developed based on the needs assessment and be implemented.
- Through an established reporting and data flow system, data will be fed upstream to the national level, where it will be processed in numerical models.
- Relevant national level research and science capacities will be supported by the LDCF project. Training of staff and investments into equipment are foreseen.
- The overall structure proposed for the agro-meteorological and EWS is as follows:

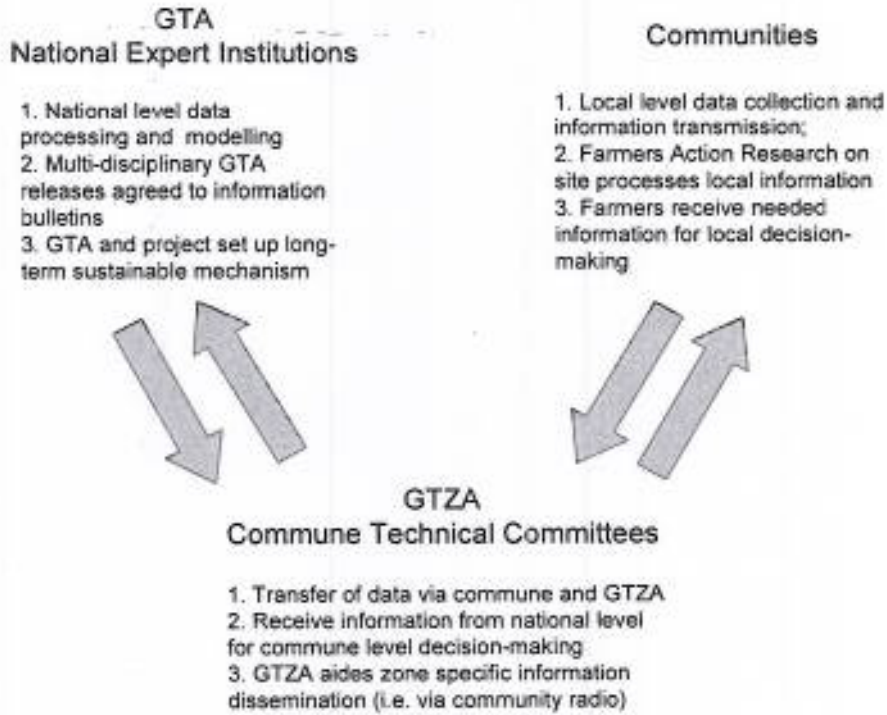
<sup>36</sup> MEPN – PPG 6, 2009. Field visit reports Mali and Togo. MEPN



- The national level Agro-meteorological Technical Group (GTA) is a multi-stakeholder group of experts that guides and discusses the multi-disciplinary work on the Agro-meteorological EWS. They are part of the Technical Support Mechanism institutionalized under the Project Steering Committee. The by the technical staff members processed data will be discussed and evaluated by the GTA, and relevant agreed to weather fore cast bulletins and other required outputs/products be released by the group. The GTA reports to equivalent Zonal Agro-meteorological Technical Groups (GTZA) based in each of the four pilot agro-ecological zones (Zones 1, 4, 5 and 8). And vice versa. The GTZA works closely with the Commune Technical Committees ultimately coordinating all CCA work in the Commune.
- The GTA is working in line with a specifically developed communication strategy, according to which end-user friendly products will be developed. For example, based on the Mali experience, it is planned to use radio as one key dissemination mechanism for the forecasting and EW information. Community radio, transmitting information in local vernacular would potentially form a very effective information dissemination mechanism.
- It is appreciated that forecast information must be delivered site/area specific and should include recommendation on adaptive measures. For example, if a later onset of the rainy season is predicts, farmers should get information on which short cycle or fast growing crops, cultivars or varieties to plant, whilst the commune level service delivery institutions should be able to source the required seeding material, to make it available to the farmers.
- A M&E component should be developed tracking the usefulness of the approach and potential bottlenecks/shortcomings. As this is a pilot approach testing of different ideas is essential to develop the most suitable and effective system for national up-scaling.

JP

- The GTA, but also the overall project must leverage the political will to implement the approach nationwide even after project duration to ensure sustainability. The M&E component will provide compelling information on the usefulness or not of the system.



*Handwritten mark*



## **Annex 7: Stakeholder Consultation Protocols**

The following consultations and activities were held during the PPG phase.

### **1. Inception workshop 25<sup>th</sup> March 2009**

The overall objective of the Inception Workshop was to share information on the PPG phase of the LDCF project and fine-tune the project proposal road-map.

#### **Specific objectives:**

1. To inform stakeholders on the project components, and GEF Project Cycle;
2. To appraise and get feedback from the stakeholders on the project concept document of the Adaptation to the effects of climate change in agricultural sector;
3. To agree on and finalise the drafting of the project document proposal work-plan and roadmap.

### **2. Consultations with Financial and Technical Partners, 23<sup>rd</sup> to 27<sup>th</sup> of March 2009**

These consultations aimed to inform partners of PPG objectives and activities and to prepare them about resources mobilisation.

#### **Specific objectives:**

1. To present priority adaptation measures;
2. To inform partners on PPG activities; and
3. To develop strategy of co-finance.

### **3. Consultation with the communities about best practice on adaptation in agricultural sector: Example of BAGA Agro pastoral Center (CIDAP north Togo), 6<sup>th</sup> to 8<sup>th</sup> May 2009**

Consultation aimed to share experience in best practices in agricultural sector to food security.

#### **Specific objectives:**

- Learn about:
1. Major climate risks;
  2. Impacts on agricultural sector;
  3. Endogenous measures;
  4. Lessons learned.

### **4. Consultation about early warning system at Bamako (Mali), 22<sup>nd</sup> to 27<sup>th</sup> June 2009**

Consultation in Bamako aimed to share experiences on early warning systems (EWS).

#### **Specific objectives:**

- Learn about:
1. Major Climate risks;
  2. Impacts on agricultural sector;
  3. Endogenous measures;
  4. Constraints in EWS and lessons learned;
  5. Discussions with farmers about EWS.

**5. Consultations with the communities, June and July 2009**

Consultations aimed at assessing local level adaptation needs, existing capacities and capacity gaps, identify priorities for the project design and select pilot sites.

**Specific objectives:**

1. Consultation with local actors (farmers, communities, local collectivity) and selection of the pilot sites;
2. To refine & spell-out the project vision and objectives;
3. Select pilot sites per Commune.
4. Consultations with the communities and identification of the desired pilot interventions.

**6. Draft project design review workshops in each agro ecological zones from the 22<sup>nd</sup> July to 4<sup>th</sup> of August 2009**

The meetings were held in Natitingou (Zone 1), Parakou (Zone 4), Savalou (Zone 5), Lokossa (Zone 8).

**Specific objectives:**

1. Assess vulnerability elements on agricultural sector;
2. Identification of endogenous measures;
3. Identify capacity building needed;
4. Review draft project design
5. Discuss implementation arrangements.

**7. Project design validation workshop, 13<sup>rd</sup> and 14<sup>th</sup> of August 2009, Parakou**

This was held at Parakou.

**Specific objectives:**

1. Review draft project design;
2. Prioritize outcomes, outputs and activities;
3. Discuss implementation arrangements;
4. Refine capacity building needs.

**8. Internal Appraisal Committee Meeting, 31<sup>st</sup> August 2009**

This was held in the UNDP conference room on 31<sup>st</sup> August 2009. The aim was to clarify the institutional arrangement and number of pilots' sites and the final project design.

**9. Technical Committee Meeting, project verification on 1<sup>st</sup> September 2009**

This was held in the Environment Ministers' conference room. The aim was to present and verify the final project design, at the end of the final mission of the international consultant.

NAME	INSTITUTION
Atelier de lancement de la phase PPG du 1 <sup>er</sup> projet PANA du Bénin, INFOSEC, le 25 mars 2009	
LANMAFANKPOTIN Georges	ABPEE+Projet Route des pêches
BADAROU Moubachirou	ABPEE
MONTCHO S. Do Gratias	MESFTP
AGBOSSOU K. Euloge	LHME/FSA
ATENE Cyr Gervais	Laboratoire Climatologie
MEHOBBA Raphael	DE/MAEP
OHOUKO Christophe	SGM/MEPN
Dr. ADOUNKPE Julien	DGE/MEPN
Dr ZEIDLER Juliane	PNUD/IECN
HOUNKPONOU Said	IDID/ONG
MAMA Isbath	ONASA
GNITASSOUN Demagnon Luc	Direction des Pêches
HOUNMENOUE M. André	DAGRI/MAEP
POSSET Viviane	PNUD
GANDJI Hilarion	FNE/MEPN
AISSI Marcelline	FAO
ASSOGBA Elsie	PNUD
AFOUKOU Franck Armel	DOI/MAEIAFBE
TOBADA Basile	DGE/MEPN
GBETOHO Pascal	DGFRN/MEPN
HAKPONDE Y. Eustache	DGIFD/MPDEAP
DJAGLI A. Céline	DGE/MEPN
GLOGLO D. Alban Audrey	Rep DGB/MEP
GBETEGAN E. Landry	CNDD/MEPN
Krystal M. R. Dossou	OFEDI/CLACC
DRUNET Nicolas	PNUD
DJAGOUE Daniel	ECO MOGON
AGO Expédit	A2D-ONG
LOKONON Séraphin	GEAID
TAMEGNON Bertin	DPPP/MAEP
DEGBE Geoges	Bénin 21-ONG
KELOME Nelly Carine	UAC
GUENDEHOU Sabin	CBRST
CHODATON Philomene	ABE /MEPN
METOWANOU Stéphane	CPIOMPDEAP
AHOUANSSOU Hector	Technicien HI
MARTINS Josiane	Stagiaire PNUD

AKLOGAN A. Olivier	SPOCND
ZINSOU Felix	GRAIB-Membre comité national
DESSOUASSI. C. Eugène	D/Pêche/MAEP
VIDEGLA Eugène	DPP/MAEP

JIMAJA Prisca épouse ABLET	DDEPN/A-L
ACACHA AKOHA Jeanne Josette	DEES/MCA-Bénin
BOKONON Eustache	DCN/Bénin
FASSASSI Djellou	DCN/Bénin
AFOUDA Abel	UAC/FAST/LAMHYA
AKALA Y. Alao	SGE/MEPN
ZANNOU Aïvohozin Armande	DPSNE/DGE//MEPN
KOTAN Clément	DE/UPE
MONTCHO S. Dèò-gratias	DPP/MSFTP
GLOGLO D. Alban Audrey	Rep DGB/MEP

**SEANCE DE CONCERTATION AVEC LES POPULATIONS DE WOUANKOU ( ARRONDISSEMENT TAIAKOU) SUR LES PRATIQUES CULTURALES ADAPTEES AWOUANKOU, le 17 juin 2009**

KOUMOUYELI Daniel	Président comité Feu de Brousse
MANA Michel	Président APE
NAMA Boniface	
NIWE Tchansi Michel	Producteur
MONDJA Combié	
MONDJA Pori	
KOUAPOUA Boni	
SANKOUIN Madeleine	Présidente G.F.
RIO Moudja	S/GVPR Producteur riz
N'TCHA N. Yanga	
MONDJA Boni René	CV
TCHANARI André	
MONDJA Nahonga	
KOUARO M. Florentin	Mairie Igba
COVI Anselme	IF
NEKOUA Bio	
FALOFA Nambova	
BONI Jean	
BIO Kounyo	
N'TCHA Nambovi	

YADI Lazare	
BAGAN Thomas	EN/ PANA
<b>SEANCE DE CONCERTATION AVEC LES POPULATIONS DE LAHOTAN SUR LES PRATIQUES CULTURALES ADAPTEES : 19 Juin 2009</b>	
FAGNINOU N. Akpovi	SA/FENAPROC
AHOGA Bernard	Président CCP Savalou
DJEVIDE C. Jules	CV Kpakpouissa Président groupement SANDO
GBEGNON Yao	CV Sègbèya
TCHAKPONTE Jean	Trésorier GVPC Communicateur PARBCC
AÏBABU Casimir	GVPC/Damè
ADIHOUE Denis	GVPC/Damè
KANPO Comlan	CV/Zomakidji
ADIHOUE Faustin	GVPC/Damè Président FONAPROC
MEDJOGBE Mathurin	CV
SOHOLOU Kingbè	Notable
EGLOZIN Théodore	CV/sègbèya
FADEGNON Clément	Notable
TCHOKPOUHOUE René	Notable
TOSSOU Séverin	CV/Agbomadin
FAGNINOU Adimagbè	Sage
MAGNIDE Azongnitoum	Groupement Houéton
HOUNDOU Monique	Sage
AKODEHOUE Hodonou	Groupement Finamin
AFFLE Bonaventure	CA/Lahotan
PEDE Hervé	CPV/K Lahotan Resp zone Est
SEGBEDE Noudéouda	TSPV/Savalou
AKPOVO Franck	RCPA/Savalou
KPADONOU Simon	RSCEPN/Savalou
TOSSOU Etienne	C/PEF Monkpa Lahotan
FATOUMBI Aristide	Rept DDEPN Zou-col
AÏTOHEOU Claude	Rept Maire Savalou
AYIGNON Wilfried	Producteur
FAGNINOU Daniel	Producteur
BAGAN Thomas	EN PANA

## Investigations de terrain sur les mesures prioritaires d'adaptation : OUAKE le 29 juin 2009

TITI Zinatou	Productrice
SITOU Manayém	Productrice
ESSIWE Zinatou	Productrice
SOUMANOU Tchamida	Productrice
ALITOU Akopua	Productrice
TOIGNIMAM Kado	Productrice
MAMAN Maria	Productrice
ALLASANE Salia	Productrice
IDRISSOU Lamatou	Productrice
PATOU Akpankpa	Productrice
ISSIFOU Safoura	Productrice
ALITOU Zinatou	Productrice
ADJAM Adama	Productrice
IDRISSOU Salia	Productrice
FOUSSENI Mariam	Productrice
LESSI Elyssa	Productrice
SIDOU Lamatou	Productrice
PATOU Abatani	Productrice
JIBRILA Salamata	Productrice
JIBRILA Alfanda	Productrice
KODJO Ama	Productrice
ZAKARI Alimatou	Productrice
SOURADJOU Aimé	Productrice
KODJO Bébé	Productrice
DJOBO Fatima	Productrice
DJATAO Tchamila	Productrice
YAYA Sabina	Productrice
AKEWE Zakari	Producteur
KONSAKA Saliou	SA/GVPR
EBAYE Souradjou	Producteur
YOLOU Alassane	Trésorier GVPR
SABI Moussa	Producteur
MEYEBA Yao	Producteur
EHONDE Samuel	Producteur
EHONDE Assoumanou	Producteur
PATOU Bernard	Producteur
ALOUKI Alidou	Producteur

TOIGNIMAM Hèssouè	Producteur
YOLOU Fousséni	Producteur
LODJA Akoussi	Producteur
HEGBE Adjam	Producteur
TOIGNIMAM Maman	Producteur
ESSIWE Naou	Producteur
LESSI Sidou	Producteur
AKEWIE Worou	Producteur
MATOWE Philipou	Producteur
YOLOU Assouma	Producteur
ABALO Augustin	CV
HOUNSAKA Mawina-Issou	Chef traditionnel
PLABAN Ali	Producteur
PLABAN Samuel	Producteur
PLABAN MOUMOUNI	Producteur
KOUNDA Patou	Producteur
AKEWE Issifou	Producteur
TITI TOMTOKOUM	Producteur
PINTA Kounda	Producteur
HEGLE Issina	Producteur
HEGLE Sosawe	Producteur
TOIGNIMAM Akilou	Producteur
HEGLE Kodjo	Producteur
MAKOULOUGNIMAM Yolou	Producteur
BONIU Idrissou	Président GVPR
EBAYE Janvier	Producteur
AGUIM Padanam	Producteur
SANKA Mathieu	Producteur
SANKA Sébastien	Producteur
KAMASSA Yolou	Producteur
SANKA Kamissawé	Producteur
TOMTOKOUM Pascal	Producteur
SANKA Boukari	Producteur
TOUNDE Issifou	Producteur
BOSSI Alexandre	Producteur
SAMBAO Benoît	Producteur
ANTOINE Passiant	Producteur
POULE Ibrahim	Producteur

TOIGNIMAM Hèssouè	Producteur
YOLOU Fousséni	Producteur
LODJA Akoussi	Producteur
HEGBE Adjam	Producteur
TOIGNIMAM Maman	Producteur
ESSIWE Naou	Producteur
LESSI Sidou	Producteur
AKEWIE Worou	Producteur
MATOWE Philipou	Producteur
YOLOU Assouma	Producteur
ABALO Augustin	CV
HOUNSAKA Mawina-Issou	Chef traditionnel
PLABAN Ali	Producteur
PLABAN Samuel	Producteur
PLABAN MOUMOUNI	Producteur
KOUNDA Patou	Producteur
AKEWE Issifou	Producteur
TITI TOMTOKOUM	Producteur
PINTA Kounda	Producteur
HEGLE Issina	Producteur
HEGLE Sosawe	Producteur
TOIGNIMAM Akilou	Producteur
HEGLE Kodjo	Producteur
MAKOULOUGNIMAM Yolou	Producteur
BONIU Idrissou	Président GVPR
EBAYE Janvier	Producteur
AGUIM Padanam	Producteur
SANKA Mathieu	Producteur
SANKA Sébastien	Producteur
KAMASSA Yolou	Producteur
SANKA Kamissawé	Producteur
TOMTOKOUM Pascal	Producteur
SANKA Boukari	Producteur
TOUNDE Issifou	Producteur
BOSSI Alexandre	Producteur
SAMBAO Benoît	Producteur
ANTOINE Passiant	Producteur
POULE Ibrahim	Producteur



SANKA Honoré	Producteur
N'PILE Kamassaka	Producteur
SANKA Papanam	Producteur
ABOUSAKE David	Producteur
TOUEGNOWA Krégouare	Producteur
ALOU Paul	Producteur
TOHO Phillipe	Producteur
HEGLE Rakia	Productrice
ADAM Pijamin	Producteur
PATOU Palawé	Productrice
PATOU Sanka	Productrice
PASSIAN Alidja	Productrice
LESSI Rawana	Productrice
ISSA Zinatou	Productrice
TOHO Mémina	Productrice
YOLOU Moukaïlam	Rept ONG AOE
MALAWÉ M. Moumoun	2è adjoint au Maire
TRAORE M Alassane	RCPA
WEDE Sail	UCPC
KAZOA Zachari	CCPC
SALEY Aliou	CCPC Ouaké
MAKILOUWE Alassane	Producteur
ZATO Lucien	Roi Badjoudè
PETRA Fousséni	CV Badjoudè
MAMA L. Bio	RSCEPN/Ouaké
NATTA Justin	DDEPN-A-D
AHO Nestor	Prof FAST/UAC
SARA BAGNAN Issifou	C/FVSSE/DDEPN A-D
BAGAN Thomas	MEPN
KOSSOUWE Mthieu	Producteur
MOUMOUN Mélanie	Producteur
TCHOU Konté Alo	Producteur
ALOUKIWE Bawaname	Producteur
LAWIN Emmanuel	FAST/UAC
ADAM Idrissou	Producteur
ENTOINE Passien	Producteur
KONTE Ambroise	Producteur
EPAYE Seidou	Producteur

OROU Daniel	Producteur
SANKA Nicolas	Producteur
TCHEDRE Arouna	Producteur
SAMBAO Benoît	Producteur
SAMBA Sébastien	Producteur
ADAM Yorou	Producteur
VINSAN Mélanie	Productrice
BONI Bonan	Producteur
POKOGNOU Aminan	Producteur
ITCHALAWÉ Yawa	Producteur
POUKARI Maria	Productrice
Investigations de terrain sur les mesures prioritaires d'adaptation : BOPA, le 1 <sup>er</sup> juillet 2009	
KINTI C. Saturnin	Mairie-Bopa
DOSSOU Faustin	Pêcheur
ANAGO Cocou	Pêcheur
KADJA Lucien	Pêcheur
GBADJI Bessanvi	Pêcheur
AMOUSSOU Yayi	Pêcheur
KPOHONSITO V. Adrien	CV Sêhomi
HOUNGBO Comlan	Sêhomi
NOUMON André	CV Pêcheur
KOUYE Kokou	C/SADE Mairie
KPANOU Anicet K.	CECPA Bopa
HOUNGUEVOU N. Janvier	ONG A2D
AMOUSSOU Toffa	Agriculteur Pêcheur
TODE Dogbo	Commerçante
Sossou Gbèlè	Commerçante
AGO Expédit	Coordonnateur ONG A2D
PECQUET Pauline	Stagiaire ONG A2D
SACCA SYLLA Boko	DDEPN M-C
AHOUANGBE Bernadette Epouse FANOU	C/SRCCE DDEPN M-C
MEVO Koffi	Représentant des Sages
KAKPO S. Arcadius	Pêcheur
FANOU Paul	Cv Agriculteur
GOUNNON Dédji	Cv Agriculteur
KLOUSOU Toliglèho	Pêcheur
FIOWA Julien	Agriculteur Conseiller

Investigations de terrain sur les mesures prioritaires d'adaptation : ADJOHOUN, le 02 Juillet 2009	
AGOSSOU Daniel	Chef de Village
OKOWENOU Pierre	Cultivateur
HOUNGBO Emmanuel	Cultivateur
HOUSSOU Justin	Elève
ZOUMENOU Clément	Cultivateur
BOTON Marcellin	Photographe
HOUNSOU Christophe	Cultivateur
HOUENOU Emmanuel	Soudeur
WAKINNOU Didier	Stagiaire CECPA
SOUNOUKOU Moïse	Pêcheur
HOUSSOU k ; Lucien	CV
HOUNWANOU Marcellin	Cultivateur
DEMAGNON Patrice	Cultivateur
VODOUNON Marcellin	Cultivateur
SODE Angèle	Vendeuse
DANSOU Emile	Cultivateur
OUSSOU Ferdinand	Cultivateur
GANDONOU Lucien	Cultivateur
CODJO Antoine	C. SADE Mairie d'adjohoun
HIDJO Gérémie	Cultivateur
HOUANSOU Benoît	Cultivateur
DOSSOU Loti .	Cultivateur
AIHAOU A. Antoine	Cultivateur
ENONZAN F. Bibiane	Stagiaire DDEPN Ouémé Plateau
MADOKPON Prosper	R/SCTPN Adjohoun
DEMAGNON Ferdinand	CA Akpadamin
ATELIER DE PREVALIDATION DU CADRE LOGIQUE DU PROJET PANA 1 la Zone agroécologique 4: Ouest Atacora-Nord Donga . Natitingou, les 22 au 25 Juillet 2009	
KASSA Angèle	Mairie Matéri
TAIROU Fati	DDEPN A-D
RADJI Mouritala	CECPA
NEKOUA Jean	OP
LAGBADOHOSSOU Aurélien	DICAF/MAEP
AHLONSOU Epiphane	ASECNA
AGOLIGAN Omer	Représentant Producteur

SARE BAGNAN Issifou	DDEPN A-D
HINVI Jonas	RD Atacora/INRAB
AHO Nestor	FSA/UAC
WOROU Barnabas	RCPA/CECPA
CHAFFA Solange	RCPA
BASSABI Maurice	C/SADE Mairie Copargo
TCHANDO Ibrahima	Représentant des Producteurs
ALAO S. Latif	RCPA/CECPA
ZANLANGNI Patrick	ProCGRN A-D
AZIN Inoussa	Mairie Ouaké
BOUKARI Silbawézè	Mairie Djougou
OFFOUMON O. Thierry	RCPA/CECPA
BARE B. Yimpo	Mairie Coby
NEKOUA Barnabé	C/SADE Coby
TAOUEMA T. Lucien	Producteur
RAHIMOU M. Inoussa	RCPA/CECPA
OMBARI T. Lucien	Mairie Toucoumtouna
TAWEMA Kouffo	Producteur
BAGAN Thomas	PANA/MEPN
DANSOU Arlette	DGE/MEPN
N'TCHA NATTA Justin	DDEPN A-D
KOUARO K. Paterne	C/DET
N'TCHAGABA BAROPA Edgard	CECPA
ATELIER DE PREVALIDATION DU CADRE LOGIQUE DU PROJET PANA 1 DANS Zone agroécologique 1: EXTEME NORD. Parakou, les 27 et 28 juillet 2009	
MAMAN Abdou Razak	CeCPA Malanville
ASSANE Issaka	Producteur
SALIFOU Fouré	Marayeuse
IDRISSOU Safia	Marayeuse
SARE SEKO Julien	Faiseur de pluie
FAROU G. Ibrahim	Producteur
ALASANE I Anassou	RCPA
NOMA Yacoubou	C/SADE
ZERMAKOUÉ B. Issaiaka	SG/Marie
LAGBADOHOSSOU Aurelien	DICAF/MAEP
LAWIN A. Emmanuel	UAC

AKPLOGAN Olivier	SP-CNDD/MEPN
BIO BERI A. Fadel	Stagiaire DDEPN/Borgou Alibori
BOUKO C. Adam	Représentant DDEPN
AHO Nestor	FSA/UAC
BAGAN Thomas	PANA/MEPN
AHLONSOU D. Epiphane	S/Climatologie ASECNA
ATELIER DE PREVALIDATION DU CADRE LOGIQUE DU PROJET PANA 1 DANS la Zone agroécologique 5 : Zone cotonnière du centre. Savalou, les 30 et 31 juillet 2009	
SEWA Joachim H.	Mairie
ABDOULAYE Oussamatou	Mairie
OROU BORO Halama	Mareyeuse
SAKA O. Isaac	Producteur
SANNI Machioudou	Mairie
BIO Soulé	???
BIAOU Eliab	CeCPA
SIDI Rachel	Secrétaire grpmt de femmes
WOROU Goura Jean	CCPC
LAGBADOHOSSOU Aurelien	DICAF/MAEP
LAWIN A. Emmanuel	UAC
AKPLOGAN Olivier	SP-CNDD/MEPN
AGOSSOU Aballo Daniel	CeCPA
BOUKO C. Adam	Représentant DDEPN
AHO Nestor	FSA/UAC
BAGAN Thomas	PANA/MEPN
AHLONSOU D. Epiphane	S/Climatologie ASECNA
AGODOKPESSI née LOBOTE Marcelline Alèdé	CeCPA Parakou
ELOGBE Sylvain	Faiseur de pluie
AWADJETINDE André	CeCPA Savalou
ALIASSIM Mohamed	Producteur
ILIASOU Mounayatou	Marayeuse
DJIMA Rahamanou	Mairie
ALASSANE M Awali	CeCPA
LOGBO Armand	DDEPN Zou collines
ADEGOKE Latifou	C/SADE
AHICHEMEY Pascal	Faiseur de pluie
ALIGNON Narcisse	Faiseur de pluie
LOMOU Félicité	Faiseur de pluie

BATAMOSSI H Michel	DDEPN/ Borgou Alibori
--------------------	-----------------------

MAMA TOURE Alassane	Mairie
HOUDONUGBO Désiré	RCPA
DOSSOUMOU Pauline	Représentante groupement de femme
ATTCHEOU Claude	Chef division environnement Mairie de Savalou
ABOUE Antoine	CeCPA
LOKO Mathias	UCP/Glazoué
LODOUHOUE Dimitri	CeCPA Ouèssè
HOUNWANOU Paul	UCPC/Ouèssè
AMADOU Yacoubou	C/SADE
OLAOU Nicolas	UCP
ADO Houénoumadji	UCP
HOULEDO N'dé	Faiseur de pluie
ATCHA Gabriel	RCPA
MIDJAHENOU Suzanne	PANA
AGBANI Sylvain	Mairie
CHAFARA Martin	CeCPA
DOSSA Guillaume	C/SADE Mairie
DANSOU Arlette	C/SA DGE/MEPN

ATELIER DE PREVALIDATION DU CADRE LOGIQUE DU PROJET PANA 1 la Zone agroécologique 8:  
Zone des Pêcheries. Lokossa, les 4 et 5 août 2009

DOSSOU Jonas Sourou	UCP
AHOUIGBAMEY Flavien Désiré	CeCPA
KOUYE Kokou	C/SADE Mairie Bopa
DOVOEDO G Isaac	DDEPN Ouémé Plateau
SOSSOU DANGOUE Justine	DDEPN/ATL Litt
BOTON Anselme	SPDL Mairie
ADANGO Etienne	CeCPA
HOUNTON Félix	UCP
LAVINON Marié Cécile	UCP
HOUNWANOU Pierre C.	UCP
GODONOU Clément	C/SADE
HOUNYE Abel	Faiseur de pluie
AMOUZOUN Christophe	UMALGA
DJINOUE Gbadé	Marayeuse

ANATO M. Aymar	Représentant RCPA
HOUNNOUGBO Pierre	UCP
N'VEKOUNON Symphorien	Affaires Domaniales/Mairie

ATELIER NATIONAL DE VALIDATION DU CADRE LOGIQUE DU PROJET PANA 1. Parakou, les 13 et 14 août 2009	
POSSET Viviane	PNUD/Cotonou
TOSSOU Elisabeth	PNUD/Cotonou
DOSSOU Bernadette	OFEDI/Cotonou
ZANOÛ AIVOHOZIN Armande	DPSNE/DGE/MEPN/Cotonou
ASSOGBA Jacob	GRAIB-ONG/Aplahoué
GANDOGO Mathurin	DPP/MEPN/Cotonou
AGBESSI Marcellin	SGM/MEPN/Cotonou
MONDE H. M. Prosper	ONASA/MAEP/Cotonou
GLOGLO Alban Audrey	DGB/MEF/Cotonou
DEGBE Georges	Bénin21-ONG/Cotonou
TIGO ADRIEN	PNUD/Cotonou
GBETEGAN E. Landry	CNDD/MEPN/Cotonou
LAGBODOHOSSOU Aurélien	DICAF/MAEP/Cotonou
AHLONSOÛ D. Epiphane	S/Climatologie/ASECNA
AKINDELE G. Sylvain	Coord/DCN/Cotonou
BOKONON GANTA Eustache	Expert DCN/DFE/Cotonou
AHO Nestor	FSA/UAC
DOSSOU Krystel	SA, Consultant
IMOROU TOKO Ibrahim	FA/UP
SARE Chabi Gani	DAGRI
LAWIN A. Emmanuel	UAC
GNANGASSI Charles	IDID-ONG/Porto Novo
DELIDJI C. Adrien	DG/ONS/Cotonou
BAGAN Thomas	PANA1
Dr ZEIDLER Juliane	PNUD/IECN
MIDJAHENOU Suzanne	PANA1
AKPLOGAN Olivier	CNDD/MEPN
DAHOUE Anselme	DGE

## Annex 8: References including to key assessment reports

- Aho, P.N., 2006. Evaluation concrete de la vulnerabilite aux variations actuelles du climate et aux phenomenes meteorologiques extremes. Republic du Benin, Programme D'Action National Aux Fins de L'Adaptation Aux Changement Climatiques (PANA), Cotonou, Benin
- FAO country profile Benin <http://www.fao.org/ag/AGP/AGPC/doc/Counprof/Benin/Benin.htm>
- McSweeney, C., New, M. and Lizcano, G., 2008. Country Profile Benin. <http://country-profiles.geog.ox.ac.uk>
- WRI, 2009. Earth Trends country profiles: Agriculture and Food security <http://earthtrends.wri.org>, accessed 06 October 2009.
- MEHU, 2006. Communication Nationale Initiale du Bénin sur les Changements Climatiques. Ministère de l'Environnement, de l'Habitat et de l'Urbanisme Cotonou, Benin
- MEPN, 2002. National Action Plan for Desertification Control (NAP/DC), <http://www.unccd.int/actionprogrammes/africa/national/2000/benin-eng.pdf>
- MEPN, 2008. Programme D'Action National D'Adaptation Aux Changement Climatiques Du Benin (PANA-Benin). Ministère de l'Environnement et de la Protection de La Nature, Cotonou, Benin.
- MEPN – PPG 1, 2009. Rapport d'Investigation Sur Les Mesures Prioritaires d'Adaptation Aupres Des Populations Des Zones Agro-ecologique Du Projet. MEPN, Programme Intégré d'Adaptation aux Changements Climatiques dans le secteur de l'Agriculture pour la Sécurité Alimentaire du Bénin, Cotonou, Benin
- MEPN – PPG 2, 2009. Point Des Projet et Programmes En Cours Ou Executes Dans Le Secteur de L'Agriculture. MEPN, Programme Intégré d'Adaptation aux Changements Climatiques dans le secteur de l'Agriculture pour la Sécurité Alimentaire du Bénin, Cotonou, Benin
- MEPN – PPG 3, 2009. Strategy de Renforcement des Capacities. MEPN, Programme Intégré d'Adaptation aux Changements Climatiques dans le secteur de l'Agriculture pour la Sécurité Alimentaire du Bénin, Cotonou, Benin
- MEPN – PPG 4, 2009. Evaluation statistique et cartographique des risques climatiques dans les zones agro – écologiques couvertes par le projet PANA 1. MEPN, Programme Intégré d'Adaptation aux Changements Climatiques dans le secteur de l'Agriculture pour la Sécurité Alimentaire du Bénin, Cotonou, Benin
- MEPN – PPG 5, 2009. Minutes of stakeholder consultations – various. MEPN, Programme Intégré d'Adaptation aux Changements Climatiques dans le secteur de l'Agriculture pour la Sécurité Alimentaire du Bénin, Cotonou, Benin
- MEPN – PPG 6, 2009. Reports from field visits – Togo and Mali. MEPN, Programme Intégré d'Adaptation aux Changements Climatiques dans le secteur de l'Agriculture pour la Sécurité Alimentaire du Bénin, Cotonou, Benin



**Annex 9: Agreements (Co-financing letters)**

*(see attachment)*

*CP*